

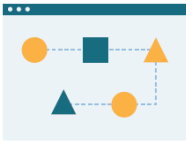


Coming April 1st!

Kansas 911 Knowledge Center is moving to LEARN - a new and improved Learning Management platform



LEARN is intuitive and easier to use



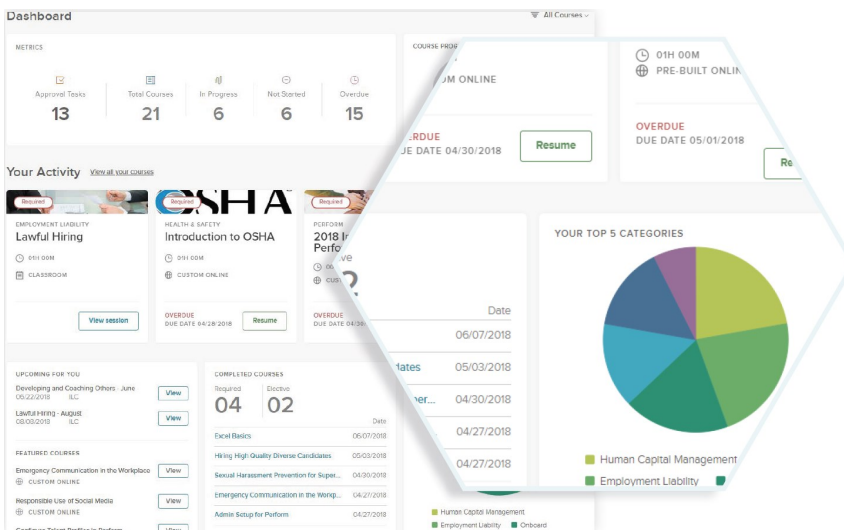
Simplify Training



Increase Engagement



Reduce Risk



Dashboard // View status of course enrollment, completion, overdue, and more.

Certificates // Generate certificates to recognize training success. Manage certifications and licenses.

Reports & Graphs // Quick, visual indicators of progress

More information coming soon! Contact lori.alexander@kansas911.org with questions.