



NG9-1-1 GIS Data Gap Analysis and Remediation

South East Region-6 Briefing
Allen County Community College
1801 N. Cottonwood
Iola, KS 66749

Thank you, hosts: Angela Murphy, ACCC, Eileen Battles, Jessica Frye!

Agenda

- 10:00 AM Welcome
 - 10:05 AM Importance of NG9-1-1
 - 10:15 AM Importance of GIS
 - 10:30 AM MSAG Update Process
 - 11:10 AM Status of Remediation
 - 11:40 AM Lunch Break
 - 1:00 PM Data Rem Workshop
 - 2:30 PM Break
 - 2:45 PM Data Rem Workshop
 - 3:30 PM The Remediation Process
 - 4:00 PM Adjourn
- Randall White, NG911 Program Mgr
 - Scott Ekberg, 9-1-1 Liaison
 - Ken Nelson, Chair GIS Subcommittee
 - Saralyn Hayes, MARC, GIS Manager
 - Jessica Frye, GIS Design Architect
 - Box Lunch Bolling Meat Mkt & Deli
 - Sherry Massey, GIS Coordinator
 - Come back soon
 - Sherry
 - Randall

NG9-1-1 Why is it important?

Randall White, PM, and Scott Ekberg, 9-1-1 Liaison

NG9-1-1 for Kansas

- *Strategy*
 - *Plan and Develop*
 - Infrastructure Implementation
 - GIS Data and Orthoimagery
 - Architecture i3
- *Complete*
 - *Complete*
 - 2015
 - 2015
 - 2016

GIS Why is it important?

Ken Nelson

- Chair, NG9-1-1 GIS Subcommittee
- KU Director GIS Data Access and Support Center (DASC)

GIS Why is it important?

- NG9-1-1 Call Routing relies on GIS data
- Ability to route emergency calls will depend on GIS data that is standardized, current, and accurate
- GIS data is considered as infrastructure

GIS Vision to Develop GIS Database

- **Statewide**

- covers every county & PSAP

- **Consistent**

- common set of data layers, data model, & implementation procedures
- address points, road centerline, emergency service boundaries

- **Current**

- regularly maintained

- **Authoritative**

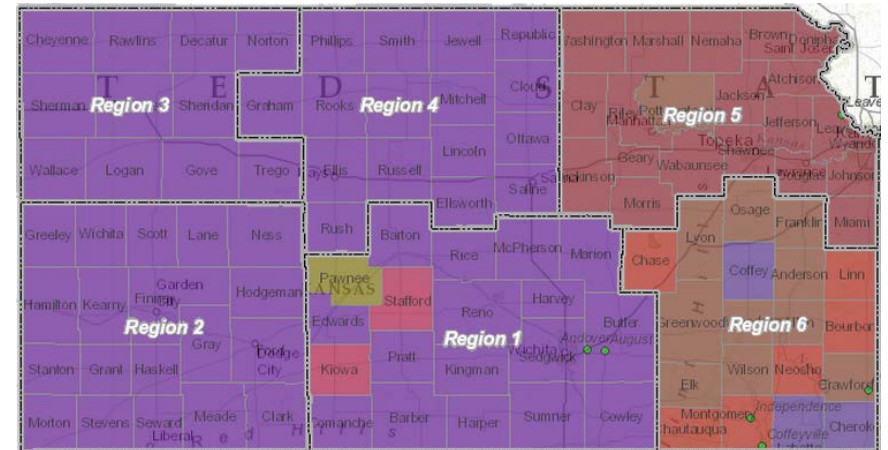
- accurate & reliable

- **Standardized**

- Meets applicable Kansas & National Emergency Number Association (NENA) Next Generation 9-1-1 GIS Standards, Data Models, & Implementation Guidelines

Three...or four...Step Process

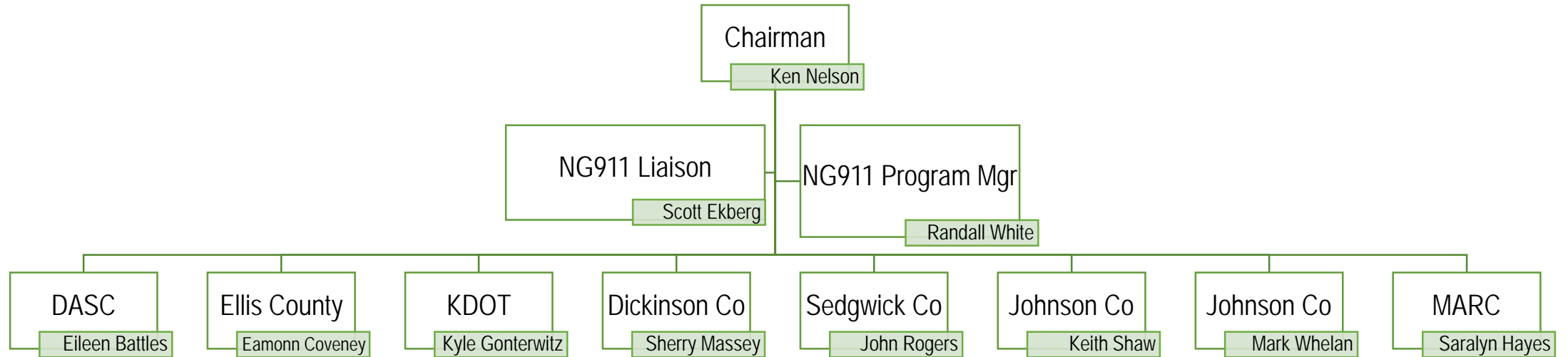
1. GIS Data Gap Analysis (Project A) by AOS
 1. Assess existing data adheres to new standard...the Gap
2. GIS Data Remediation (Project B)
 1. Remediate data to new standard
 2. Performed by jurisdiction or one of the following vendors:
 1. ATCi
 2. GDR
 3. GeoComm
 4. Kimble Mapping
 5. R&S Digital
3. GIS Data QA Audit (Project C) by AOS
 1. Ensure all issues were remediated
4. Ongoing maintenance



911 Council GIS Subcommittee

- Comprised of Council members & external GIS subject matter experts
- Recommends GIS data standards and protocols for use by PSAPs, telecommunications carriers, and GIS service providers
- Oversees RFI and RFP's issued on behalf of the Council and recommends selection of vendors and services
- Provides oversight of GIS service contracts approved by the Council
- Coordinates work of GIS providers with PSAPs and other stakeholders
- Coordinates state level NG911 database administration with database administrator and NG911 stakeholders

GIS Subcommittee



GIS Subcommittee Activities

- Work with selected vendors on the GIS Data Gap Analysis & Remediation
- Develop *Kansas NG9-1-1 GIS Data Model* to support Project B remediation activities and ongoing maintenance activities
- Document business needs and RFP specifications for statewide imagery
- Develop and recommend aggregation & maintenance strategies for statewide master repository
- Coordinate with technical committee and others to develop a training to support the operation/maintenance of NG9-1-1 GIS components
- Develop GIS-related portions of the 911 Council's *Governance Policy*

Statewide Orthoimagery Procurement

- Product
 - Statewide, 1-foot pixel resolution, natural color, orthoimagery
 - Licensed produced – allows access to the following:
 - All state government agencies and regents-level institutions
 - All county-level governments
 - All municipal (city) governments
 - All PSAP's
 - All Public School Districts
 - Any firm doing work on behalf of one of these entities
 - No public domain distribution
- Format(s): GeoTIFF, MrSID compressed, and Web Map Service
- Timeline
 - Regions 1-5, web service available by the end of August, 2014, with GeoTIFF & MrSID to follow 30-60 day later
 - Region 6 web service available January, 2015 with GeoTIFF & MrSID to follow 30-60 days later
- Access
 - DASC will provide distribution services
 - Create user accounts for web services
 - Provide copies of GeoTIFF/MrSID data on external hard drive
 - See www.kansasgis.org or kansas911.org for more details

MSAG Update Process

Saralyn Hayes

- GIS Subcommittee
- MARC GIS Manager

Status of GIS Data Remediation

Jessica Frye, GIS Design Architect, AOS

Lunch

Congratulations Bolling's Meat Market & Deli
owners

Mitch Bolling, Sharon Bolling, Cara Bolling Thomas
honored as Kansas Small Business Development
Center's PSU KSBDC 2014 Emerging Business of the Year

Please pay Randall \$10

GIS Data Remediation Workshop

Sherry Massey

- GIS Subcommittee
- GIS Coordinator, Dickinson County

Take a Break

Come back soon ;-)

The GIS Remediation Process

Sherry Massey

- GIS Subcommittee
- GIS Coordinator, Dickinson County

Closing Thoughts

Randall White, NG9-1-1 Program Manager

Who do I call if I have questions

- Flagged GIS Data / Report
- Accessing DASC ftp Folder
- Remediation of Data
- Bid and Proposal (B&P)
- Project Management
- None of the Above
- Jessica Frye (785) 231-4355
- Eileen Battles (785) 864-2289
- Ken Nelson (785) 864-2164
- Scott Ekberg (785) 438-8440
- Randall White (913) 485-9911
- Scott Ekberg (785) 438-8440



South East Region-6 NG9-1-1 Briefing

Thank you for coming.

Please drive carefully.